

FOCUS OF THE WEEK

In Care and Care Leavers

Who are classed as In Care and Care Leavers

Children and young people are taken into the care of the local authority when they cannot remain at home. This is either because it is unsafe for them to be there, or because their parents are unable to look after them.

A care leaver is an adult who has spent time living in the care system, away from their family. This could be with a foster family, in a children's home or supported housing service, or under another arrangement as agreed by their social worker. Young people usually leave care when they are 18 years old.

Barclays Life Skills

Barclays Bank have found that care experienced young people need support in a range of ways, including:

- Entering the world of work
- Managing their finances
- Running a household
- Going to university
- Managing their emotional wellbeing
- Feeling like they are a part of their local community

Because of this, they have put together some online resources to support these young people. You can access the resources [HERE](#).



Looking for someone to talk to?

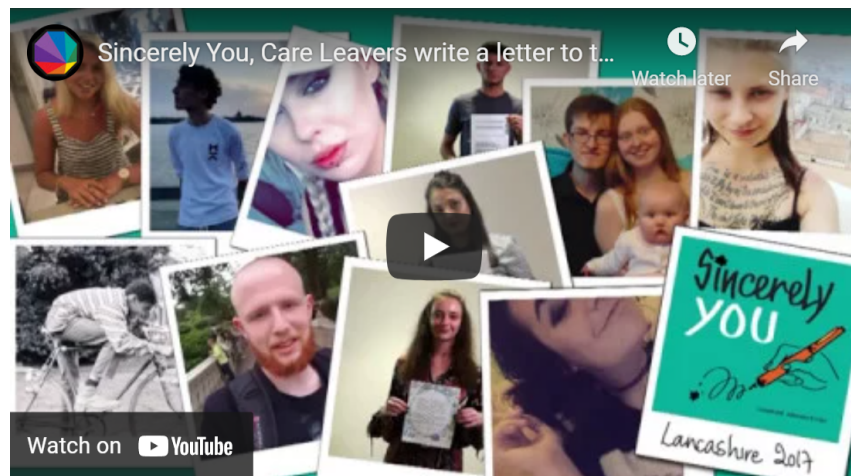
Are you in care, a care leaver, or supporting someone who is? Looking for help and advice?

Call our **FREE Care Advice Line** on **0800 023 2033**

Or send us an email advice@becomecharity.org.uk

Lines are open Monday to Friday 10:30am - 3pm

BECOME.
THE CHARITY FOR CHILDREN IN CARE AND YOUNG CARE LEAVERS



Turn2Us

Turn2Us are a financial support charity who have a really handy Benefits Calculator on their website. This might be particularly helpful if you are a Care Leaver and are unsure on what financial support you are entitled to. You can access the calculator [HERE](#).